

SYSTEM ACCESSORIES & SERVICE OUTLETS

Part Code	Description
UFUF6x2	Universal Fitting to Suit 150mm Wide Underfloor Trunking, Two Compartment
UFUF9x2	Universal Fitting to Suit 225mm Wide Underfloor Trunking, Two Compartment
UFUF9x3	Universal Fitting to Suit 225mm Wide Underfloor Trunking, Three Compartment
UFUF12x3	Universal Fitting to Suit 300mm Wide Underfloor Trunking, Three Compartment
UFUF12x4	Universal Fitting to Suit 300mm Wide Underfloor Trunking, Four Compartment

Sizes (width x depth) mm	*Single Compartment Ref. UF1	*Two Compartment Ref. UF2	Three Compartment Ref. UF3	*Four Compartment Ref. UF4
150 x 25	UFUF6x2*#	UFUF6x2#		
150 x 38	UFUF6x2*#	UFUF6x2#		
225 x 25		UFUF9x2#	UFUF9x3	
225 x 38		UFUF9x2#	UFUF9x3	
300 x 25			UFUF12x3**#	UFUF12x4#
300 x 38			UFUF12x3**#	UFUF12x4#

*UFUF6x2 discard the underpass assembly, which is screw-fixed.
 ** All Underfloor Universal Fittings are compatible with EW7 series plates except UFUF12x3, which is compatible with EW100 series service outlet plates.
 # Made to order.

Compartment Dimensions



UNDERFLOOR (IN SCREED) TRUNKING SYSTEMS

Underfloor Trunking



Part Code

UF

Supplied in 3m lengths.

Underfloor Blank End



Part Code

UFBE

For use with UFUF69.

Underfloor Coupling



Part Code

UTFC

Supplied singly, in 3m lengths.

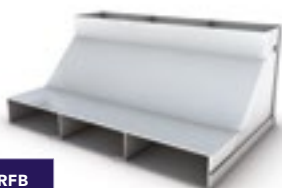
Flange Coupling



Part Code

UFFC

Riser Bend



Part Code

URFB

Trunking Height

25mm

URFB Height

130mm

38mm

142mm

Depth of screed should be quoted when ordering.

Adjustable Collar

(For Underfloor)
Universal Fitting
9 & 12 (see pg 122)



Height can be manufactured to suit customer requirements. Please specify screed depth and adjustable range required when ordering.

Riser Bend (From underfloor into skirting trunking)



Part Code

UFST

Depth of screed should be quoted when ordering.

Riser Flange



Part Code

UFRF

Depth of screed should be quoted when ordering.

Service Outlet (PVC Trim)



Part Code

CT/S3

Description

For use with UFUF9

CT/S43

For use with UFUF12

Supplied with a 7mm recess & PVC Trim as standard.
Stainless Steel Trim & deeper recesses (9mm, 15mm, 20mm, 25mm) are available to order.

Inspection Lid



Part Code

CT/I3

Description

For use with UFUF9

CT/I43

For use with UFUF12

Supplied with a 7mm recess & PVC Trim as standard.
Stainless Steel Trim & deeper recesses (9mm, 15mm, 20mm, 25mm) are available to order.